

XML Transformer

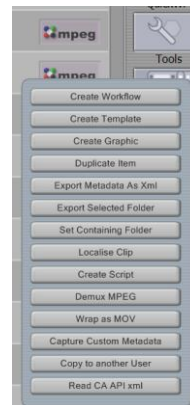
Introduction

The XML transform template allows for existing metadata, basic information on clips in ContentAgent and system information to be mapped to any externally defined metadata or XML schema.

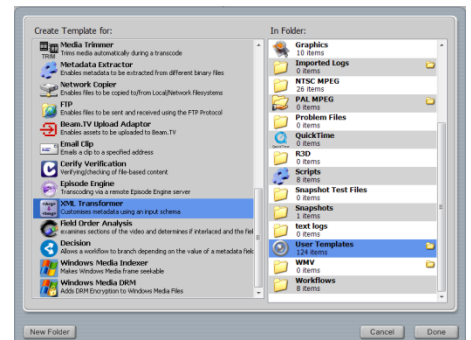
How it works

1. Create an XML transform template and set up the mapping from different internal sources to a selected external source.

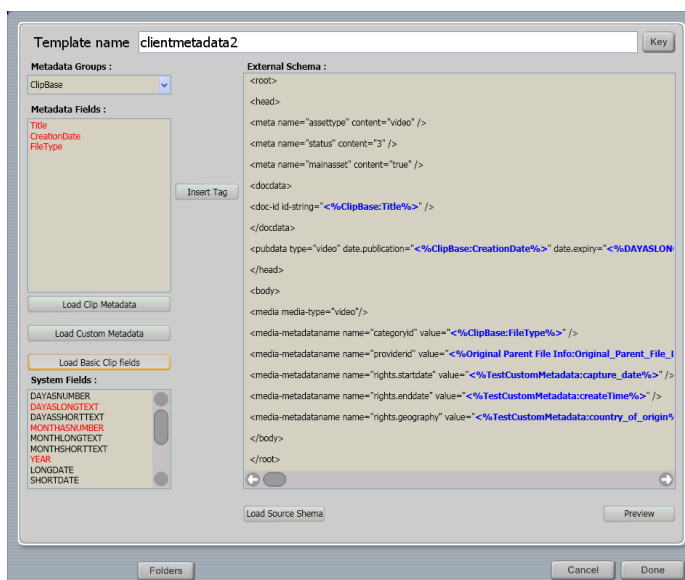
- From the tools menu, select Create template



- Select XML Transformer and the folder where the template should be saved

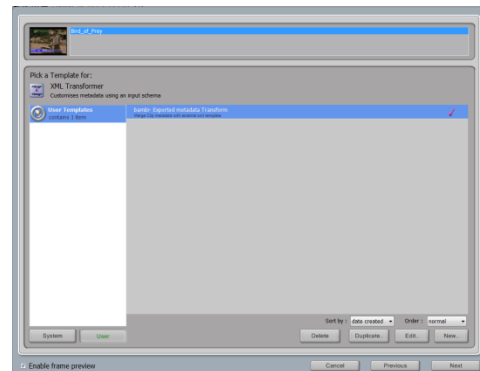
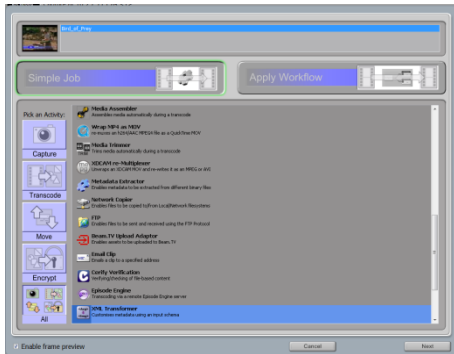


- Set up the mapping in the XML Transformer mapping tool

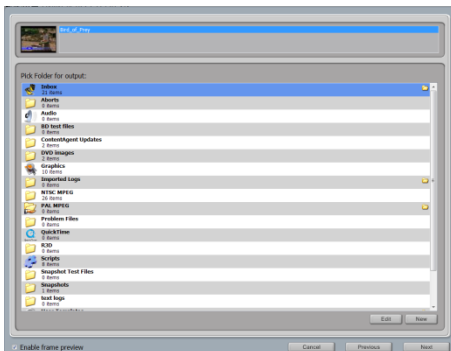


- On the left side, the internal information, existing metadata etc. From where the information will be read during the transform.
 - Sources:
 - Clip metadata, any existing metadata on a clip, you will be asked to select a clip, and all the groups and fields that contains metadata for the clip will be available to choose from.
 - Custom metadata. Any custom metadata schemas that exists in ContentAgent.
 - Basic Clip Fields. These are attributes that are kept for all media clips in the database such as Title, Creation date etc.
 - System Fields. Build any custom date format that will be set up when the new xml schema is created.
- To the right, load the source schema - this is the external XML schema to which the internal information will be mapped.
 - A new schema can be typed in the space available. Currently no checks are done to check for valid XML structure, so any text format will be accepted.
 - Select 'Load Source Schema' to load a schema that has been previously imported into ContentAgent.
 - Schemas could be created with existing tags (tags are denoted with a START <% and END %>) using this format the tags that have been setup in existing files, will be highlighted and easy to be spotted. This is however not necessary as any fields that are placed in the schema will be automatically wrapped in tags.
 - If you click within an existing tag, the whole tag will be highlighted, and any operation performed on it will be done on the whole tag (i.e. deleting will delete the whole tag, dropping a field from the left will replace the whole tag)
- Template name
 - If a source schema was loaded, double clicking on the template name textbox will use the title of the selected schema as a template name, any name can be entered - this will be the name of the template.
- Mapping the fields
 - For Metadata fields, select a group, the list of fields available in the group will be displayed.
 - Select a field from field list and use Insert Tag or drag the selected item to the desired position in the source schema. If Insert Tag is clicked, the selected field tag will be entered at the last location where the Caret was placed in the right hand editor.
 - If an existing tag was selected, the whole tag will be replaced by the selected internal tag
 - Select System fields to display current date and time fields, these fields can also be entered using Insert Tag or dragged by selecting the item, and holding the left mouse button.
 - Dragging a field over an existing tag will replace the whole tag with the selected field tag.
 - Fields that has been used in the current template will be displayed in Red. Fields can be used more than once.
 - Fields will be displayed within tags, in the format <%group:fieldname%>, System fields will be displayed as in the list, in capital letters surrounded by the tags.
- Preview
 - This will show the end result of a transformation, if no clip have been selected most of the tags will have empty spaces, System fields will show current date and time.
- Done
 - Select done to save the template

2. Select a media clip for which the database the external metadata need to be created
 - The newly created template can be used in any workflow. The output will be the schema with the tags replaced by data from the source clip.
 - Select a clip from the database, and selected new job, from All Activity list, select XML



- Transform, select User templates and select the template that was created using the previous instructions.



- Select Folder where the output from the transform is to be saved, the resulting workflow can be viewed and edited.

- The XML Transform Template can also be edited at this point

